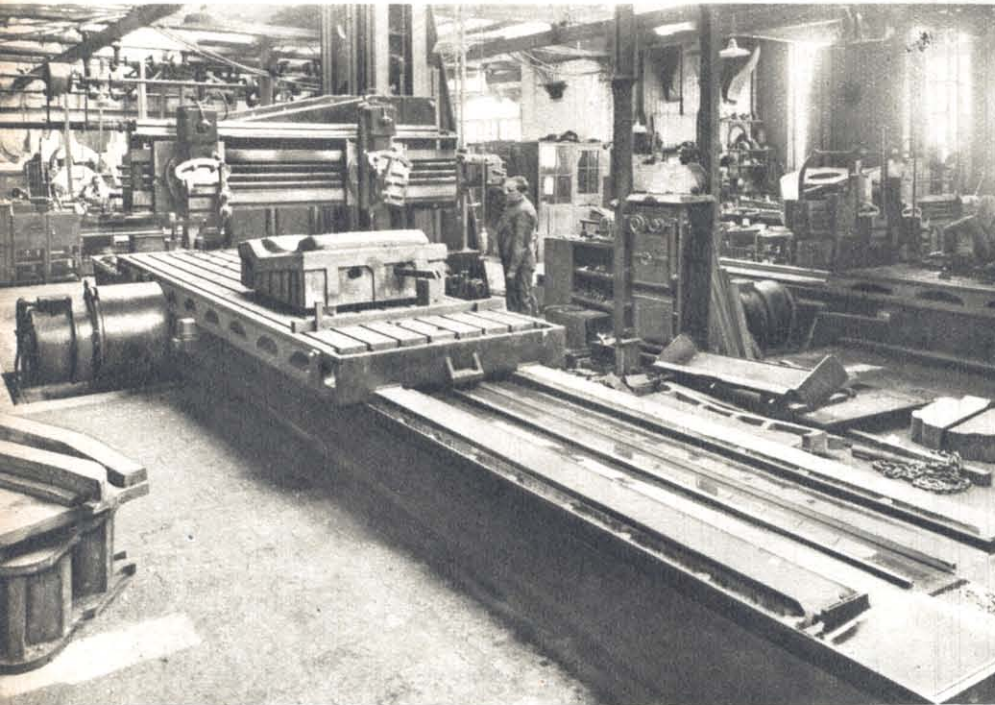


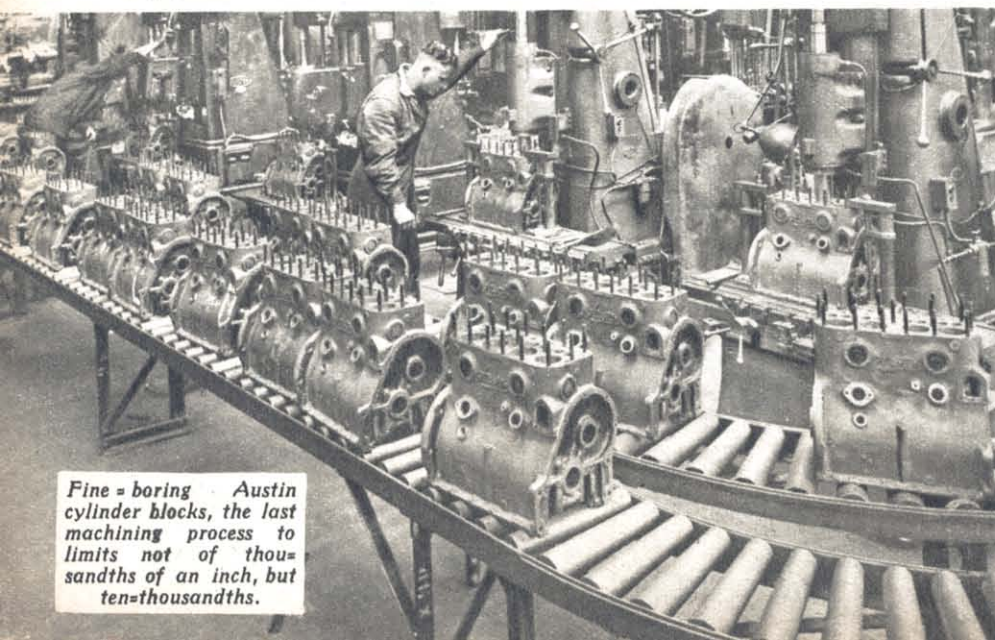
In the Austin foundry: casting cylinder blocks.

(Right) Part of the sewing room in the upholstery department.



This is a planing machine at work in the tool room on a body panel die.

(Right) In the cutting-out room of the upholstery department.



Fine = boring Austin cylinder blocks, the last machining process to limits not of thousands of an inch, but ten-thousandths.



# A LONGBRIDGE

With a Camera in